



CRYSTAL LINES

JUNE-JULY / 2022 / ISSUE #3

IN THIS EDITION

Crossword Clue Teaser – all folded into a
Geology Lesson! |

Silver Foil Enamelling – a Showcase of your
Workshop Creations! |

Competition Time – Events Calendar stacked
with Opportunities to Get your Entries in!



1966 - 2022

NORTH BRISBANE LAPIDARY CLUB INC.

PATRON
PRESIDENT
VICE PRESIDENT
SECRETARY
5th Member

Leanne Linard
 Don Clark
 Carol South
 Paul Fulloon
 Lola Tierney

TREASURER
MEMBERSHIP
LIBRARIAN
EDITOR

Ray Tierney
 Katarina Hayston
 Linda Hamilton
 Trisna Sudana

WORK SESSIONS		JOINING FEES		+	ANNUAL SUBSCRIPTIONS	
Monday	9.00am-12noon	\$30.00	First member		\$60.00	First member
	& 7.00pm-9.30pm	\$20.00	Second member		\$48.00	Second member
Tuesday	7.00pm-9.00pm	\$40.00	Family (at same address)		\$120.00	Family (2 adults & 2 children 12-18 years, same address)
Wednesday	9.00am-12noon	\$20.00	Pensioner (65 years+)		\$30.00	Pensioner Under 70 Years & Junior members
Friday	7.00pm-9.30pm	\$20.00	Junior member (12-18 years)			
Open other times by arrangement		\$20.00	Associate member			
WORKSHOP FEES		OTHER FEES			CUTTING & TOOL FEES	
\$5.00	Per work session	\$35.00	Club T-shirts		No cutting fees.	
			Silver and gem rough sales and available			

BASIC REQUIREMENTS NEEDED TO CARRY OUT LAPIDARY WORK (CABS)

- Waterproof apron
- 3 power head loupe, cost approx. \$30.00
- 10 power hand loupe
- Dop stick
- Slabbed stone of your choice

BASIC REQUIREMENTS NEEDED TO CARRY OUT FOSSICKING

- Good maps of the area you intend to visit
- 1 x Aluminium sieve 305mm diameter by 3mm, mesh 1/8 inch
- 1 x Aluminium sieve 305mm diameter by 7mm, mesh ¼ inch
- 1 x Small sturdy shovel (not the fold up type)
- 1 x Plastic gold pan
- Footwear – Preferably boots to support ankles
- Headwear – Wide brimmed hat
- Transport – A 4x4 is nice, but a lot of areas can be accessed by conventional vehicles
- Accommodation – Hotels, motels, caravans or camping. This can lead to very enjoyable family bush weekends
- Communication – With the outside world is not necessary, but very handy to have. A mobile phone is useful in case of emergency and we strongly suggest a handheld UHF CB. These cost around \$50-\$100

The above are only the basic requirements to enable you to carry out this hobby. Extra equipment can be obtained at a later date if required. Enjoy yourselves; leave fossicking areas clean for others and some material behind for others – good luck and good fossicking!

Our Newsletter is proudly printed by *Leanne Linard MP*, State Member for Nudgee.

Clubhouse Address: Albert Bishop Park; Nudgee Road; NUNDAH QLD 4012
 Postal Address: PO. Box 48; NORTHGATE QLD 4013
 Phone: (07) 3260 7025 E-mail Club: info@nblc.com.au Web Site: www.nblc.com.au

NORTH BRISBANE LAPIDARY CLUB INC.

Club Reports & News

Presidents Report June 2022 (D. Clark, *President NBLC Inc*)

North Brisbane Lapidary Club Presidents Report June 2022 Welcome to all of the new North Brisbane Lapidary Club members. I hope you enjoy the many and varied opportunities we have for you to become involved in Lapidary activities. I hope to meet you over the coming weeks.

As winter approaches many club members are preparing to go on the annual club fossicking trip or to embark on their own fossicking endeavours. I hope you remain safe on your journeys and that you are successful in your fossicking. We look forward to hearing the stories from the trips and seeing the great material I am sure you will find.

Please watch the club notices for the upcoming events as dates are being set for courses as we organise them. Lost wax casting, faceting and other activities are being planned and being strongly supported by members as each activity is announced. These activities can only be run when the members who run them are available and dates are free in the calendar. If you miss out on any of these activities we plan to repeat them as soon as we can if the demand is there.

NBLC has some of the best lapidary club rooms in Queensland and in July our annual major clean-up of the club building and its surrounds is being planned. In this event we give the club rooms a thorough and detailed clean preparing it for the year ahead. A few hours of your time will help to share the workload and it is also an opportunity to meet new club members and catch up with members you have not seen for a while. Please respond to the email on this subject to be included in this clean-up.

The education night with the subject of Gold has been set for a Saturday night early in August and a dedicated email will be sent with regards to this event. Gary has put a lot of work in preparing for this and it will be great opportunity to increase your knowledge on gold and see a demonstration on panning for gold.

I have been working for the Australian Electoral Commission helping with the election that has just happened and with the activities that need to be done after the election. The mandatory requirements for me to work include wearing a face mask all day and regular cleaning activities to minimise any possibility of spreading Covid and the flu. These requirements have highlighted to me that these viruses are still with us and we must take appropriate action every day to make sure we are still safe.

It is important to recognise these viruses are still with us and I urge all members to do all they can to ensure you and other club members are safe. If there is any possibility that you may have Covid or the flu please isolate as needed.

Thanks to all those members who so freely volunteer their time and efforts for all the many tasks and thus make this club as successful as it is.

NORTH BRISBANE LAPIDARY CLUB INC.

Presidents Report July 2022

Welcome to all of the new North Brisbane Lapidary Club members. I hope you enjoy the many and varied opportunities we have for you to become involved in Lapidary activities. I hope to meet you over the coming weeks.

Existing members, please make all new members welcome at the club by introducing yourself, greeting them and sharing your own knowledge of lapidary work and the club.

I have in the Lightning Ridge area over the past couple of weeks and it is plain to see the numbers of people in the area as tourists or gem hunters. The Ridge itself was busy when we visited and the numbers were growing as the Opal Festival draws near. I know several members are going to the festival and I hope they enjoy it and find good quality rough to work.

The annual club fossicking trip is well underway with a small group of members undertaking the trip. I understand everyone is enjoying the trip and we look forward to seeing the gems they find.

The courses that have been planned in the near future have been very quickly filled with participants and most have people on waiting lists. We will have more courses as instructors become available and I urge all interested members to watch the club notices for the upcoming courses as we organise them. Thanks to everyone involved for organising and running these courses.

The Gold education nights are set for the 6th and 13th of August 2022. Invitations have been sent to most clubs in the Brisbane, Redlands and Moreton regions. We have a good response so far for the first night and interest is building for the second night. Please book in to this evening as early as possible to ensure you get a seat as we have limits due to Covid. Gary has put a lot of work in preparing for this and it will be a great opportunity to increase your knowledge on gold and see a demonstration on panning for gold.

Clean up day Sunday 21st August 2022 starting at 9:00am. It is the one day per year that we give the club rooms and grounds a thorough clean-up for ourselves and visitors to the club. Even if you have just a few hours available we would be happy to have your help in this project. We have planned the day by breaking up the club rooms into areas for people to concentrate on and work with the team on the tasks for that particular area. Please respond to the email on this subject to be included in this clean-up.

The club regularly purchases new equipment and upgrades or refurbishes existing equipment. If you have never used a piece of equipment and/or don't know how to use it you may place yourself in a dangerous situation or inadvertently damage the equipment. We had had a case where a piece of new equipment was damaged. Luckily it was slight damage and is now being repaired. If you have never used a piece of equipment at the club please ask the Instructor about the safety and operation of the equipment before you use it.

The wearing of a face mask in the club rooms has been re-introduced to best protect all members. I am sure you know how the cases are increasing in Queensland. I continue to urge all members to do all they can to ensure you and other club members are safe. If there is any possibility that you may have Covid or the flu please isolate as needed.

Thank you to all those members who so freely volunteer their time and efforts for all the many tasks and thus make this club as successful as it is.

Don Clarke

President NBLC Inc.

NORTH BRISBANE LAPIDARY CLUB INC.

General Meetings June and July 2022

General meetings were held on Wednesday the 15th of June and 27th of July 2022.

Following successful talks with our neighbouring lapidary clubs in SEQ, NBLC is looking to reintroduce an inter-club competition to strengthen our community of avid silver smithers, faceters and polishers. This competition has been on hold for the last number of years but has proven a great link to share knowledge, along with education nights.

Since the start of April, 16 new club members have joined our ranks, making a total of 225 financial members at the club.

A free workday (to work on your competition, or hobby pieces) will be held on the 28th of August.

A reminder to all club members to please mind their water usage while using the club facilities. Back in May, it was estimated that at a typical Wednesday and Friday session, around 240L and 90L of water is used. Washing stones or silver can be reduced by using paper towels or rags to wipe off excess oil or using a container with water in it instead of running water. Certain silversmithing machinery can also suffer rust damage when overfilling the containers, so there's an opportunity to save on our water and equipment maintenance bills. Our next water bill will be assessed and actioned accordingly.

A reminder that members can bring their household bottles for the club's Containers for Change donation pool and donate the money to the club.

Discussions for the Gem Show are underway with proposed dates being Saturday and Sunday March 4th and 5th 2023 (with setup on Friday afternoon). A show committee is required to help ideate and organize the event which needs to be established by September. If you are interested in volunteering for the event, please contact the club or join the August General Meeting (Wednesday the 17th) to raise your interest.

From the Editor

I am excited to announce that I'm starting a new chapter and studying a Master of Education to spin my geotechnical engineering experience into tutoring! This unfortunately means that I no longer have the capacity to keep up the role as Newsletter Editor for you wonderful members.

I wanted to say a thank you to my audience here for the last few issues of the Crystal Lines. Even if our time was short and sweet, I hope you enjoyed a moment in your day to escape in a fantastic world of geology and jewellery.

A huge thank you to Carol South and Carol Money for informing me and supplying an amazing amount of content for the newsletter, for proof reading and editing my rambling. Thank you to Thierry for emailing through your many creations – either your enthusiasm, or your work rate are incredible – or both!

I realise I could have been more proactive with being at the club and being more visible to capture more of each of your projects. It has been a tough couple of months as I've been dedicated to caring for a sick old pup who I said goodbye to last fortnight. Nevertheless, I'm sure I'll make time to come back to the club, even if just to say hi to Kirra and have a cuppa with all of you lovely members. For the newsletter or not, I really did just enjoy seeing the array of creativity that everyone brings to their craft. You all make it uniquely yours, which makes our club such an amazing community to be a part of.



Thank you again, dear reader, and my best wishes to the Crystal Lines editor(s) going forward!

Trisna Sudana

NORTH BRISBANE LAPIDARY CLUB INC.

Geology 101 – Crossword Clues!

To give a few clues from last issues' crossword, I'd thought I'd teach you about soil. Rock is an inorganic material made of two or more minerals. Soil is weathered – or broken down – rock, which can be physically weathered by the wind and water or chemically weathered. An example of chemical weathering was in the last issue, too, of the limestone caves of the Margaret River region. Here, water mixed with tannins and oils of the native flora and fauna increasing in acidity. This caused a corrosive reaction in the limestone to break down into solution, and precipitate back out as limestone stalactites and stalagmites as shown in my photos.

Soil is generally classified into five different material types by their size. Biggest are cobbles (think big pebbles you buy for your fountain from bunnings), then gravels (which are used in your road bitumen varying from to 2.3mm), sand, silt and clay (which are too small to feel the 'grit' of in your fingertips). Geologists and geotechs find silt and clay hard to differentiate from feeling a soil sample, though silt is thought to feel more like a powder and have a 'soapy' feel when rubbed on your teeth. I wouldn't advise ever doing that test though, it can be done in a laboratory sieve easily enough! When it comes to gardening, you'll generally want a loam – a mixture of sand, silts and clays – within your soil, as well as some organic matter for a happy microbiome.

Enamelling – Next Steps (written by Carol Money)

I love working in both silver and enamels, I especially like using my torch when the weather is colder. I have spent a fair amount of time trying out new techniques in enamelling and thought it would be fun to share what I had learnt in the form of a workshop, which we ran in May. All places booked out with Fiona, Linda, Debbie, Lisa, Marianne and Venessa attending, Carol G and Helen (for a short while) assisting .

Carol G and Helen run the beginner workshop, which if you have not yet attended I would highly recommend as it is a lot of fun.

The main technique we tried was using silver foil, which can be used to either highlight an area or to completely cover the copper, depending on the design. The areas covered by the silver foil show off the properties of translucent enamel colours. It is a cheaper way to experiment than working direct on silver.

Other techniques tried were preparing a white base so you could draw a design with graphite and using finer ground enamels (overglaze colours), which act like paints.

The feedback was very positive and hopefully the workshop not only encouraged members to use some different techniques, but also to dust off their enamels and produce some more works of art.

NORTH BRISBANE LAPIDARY CLUB INC.



Our lovely club members and their silver foil enameling technique creations.

NORTH BRISBANE LAPIDARY CLUB INC.

Courses & Workshops

Expressions of interest for future faceting, lost wax casting and enamelling courses are always welcome and can be made via email to info@nblc.com.au. Silversmithing and cabling can be taught at any time from your friendly session instructors. Beginner's silver packs are available for your first and second bracelets. Please see the silver instructor for your session for more information and to purchase a pack.

Upcoming Meetings – all meetings online via Zoom unless stated otherwise with a link emailed out in the days prior to the meeting.

General Meeting: Date: Wednesday 17th August, 2022
Start: 7:30pm via Zoom

Date: Wednesday 21st September 2022
Start: 7:30pm via Zoom

Events Calendar

The latest club events are regularly emailed and updated on the website at <https://nblc.com.au/events/>

Date	Activity	Instructor(s)	Cost	Comments
9am-4pm 14 th Aug, 2022	Opal Course	John Fleming and Don Clarke	\$50 course includes manual on opal, plus materials (\$15 for 3 pieces opal to be paid directly to John Fleming on the day)	EVENT FULL Email info@nblc.com.au including phone number to be added to the wait list B.Y.O lunch
7:30pm Wed 17 th August, 2022	Monthly general meeting			
9am-4pm, 20 th August, 2022	Instructor Training – Fold Forming with Mauri Maunsell			
9am-4pm, 21 st August, 2022	Annual Spring Clean of Clubhouse (inside and out). B.Y.O lunch As many volunteers as possible please			
9:30am-4:30pm, 28 th August, 2022	Free workday at club Open day			
9:30am-4:30pm, 17 th Sept, 2022	Free workday at club			
7:30pm Wed 21 st Oct, 2022	Monthly general meeting			
7-9pm, 30 th Sept, 2022	Lost Wax Casting	TBC	\$5	Beginners and experienced members welcome. Please contact Carol with any queries to info@nblc.com.au
10:30am-2:30pm, 2 nd Oct, 2022	Lost Wax Casting Burnout	Work session open to members attending the previous lost wax casting, for collection and payment of their pieces, plus time to spend cleaning them up as required. Please do not turn up earlier than 10.30am		

NORTH BRISBANE LAPIDARY CLUB INC.

Date	Activity	Instructor(s)	Cost	Comments
7:30pm Wed 19 th Oct, 2022	Monthly general meeting			
2 nd December, 2022	Christmas Competition entries close			
10 th December, 2022	Christmas Party – save the date! Details TBC			
31 st January, 2023	Peter Smith Memorial President's Challenge Competition entries close			
Fri 3 rd to Sun 5 th March 2023	Proposed Gem Show 2023 dates, details TBC			

Club Competitions

Peter Smith Memorial Challenge

For this years' competition (The Peter Smith Memorial Challenge) we are encouraging all members to enter at least one piece into the annual competition, whether you are a beginner or a more experienced member. It is a level one competition which means it is only amongst our club members, and there are two divisions, novice and open, to ensure our newer members do not have to compete with those with a lot more experience.

The entries are sent off to external judges and the marked on several aspects, including visual effect, meet points, scratches and polish etc (more details of the marking criteria can be seen on the judging sheet attached to the entry forms). The completed judging forms are returned with your entry at the Gem Show and the feedback is really beneficial and any comments are always constructive and encouraging. There are also prizes for the winners of each category based on the highest scores.

The competition entries are to be submitted by January 31st 2023, and the winners are announced at the Gem Show.

Entry forms for each level and division can be found on the website here: <https://nblc.com.au/the-peter-smith-memorial-presidents-challenge-competition/> or at the club.

Please feel free to ask Carol Money any questions.

Faceting

The material used for this category must be **TOPAZ** - please check entry form for the size requirements and further details. You are welcome to source your own TOPAZ but the club are also working on finding a supply, you will be notified when it is available.

We have had a couple of faceting workshops where those attending would have cut a round brilliant, so the novice division is a round brilliant cut and so achievable by all members having attended this course. (That includes me!) The open is a marquise cut to provide a little more challenge. As the name indicates any member can enter the open but the novice can only be entered by those members that have not previously won or scored higher than 75 points in a previous entry.

Cabochon

The material used for this category must be **JASPER** - please check entry form for the size requirements and further details. There are some slabs of jasper for sale at the club, please see the duty officer if you would like to purchase some for your competition entry.

NORTH BRISBANE LAPIDARY CLUB INC.

The main difference between the divisions is the shape requirement of the cabochon. The novice is a standard oval shape and the open division is a pear shape, and as the name indicates any member can enter the open but the novice is only for those that have not previously won or scored higher than 75 points in a previous entry.

Metalsmithing

The criteria for both competitions are: A hand fabricated piece of jewellery, it can be a ring, bracelet, necklace, brooch or earrings (check entry form for all details).

The main difference between the divisions is the open must contain a setting while the novice has no setting, and as the name indicates any member can enter the open but the novice is only for those that have not previously won or scored higher than 75 points in a previous entry.

Most Appealing Gemstone

The stone can be any style (Faceted, Cabochon, Carved). It must be cut as a gemstone to be set in a piece of jewellery. The stone can be cut from any normal cabochon or faceting material, including opal.

Christmas Competition

This one is judged/ voted on by those attending the Christmas Party with coins donated to the favourite piece (all anonymous). Winner the piece with the highest value of coins at the end of the day.

This years' theme is Celtic, so lots of potential. Just search the internet and you will find items on all the Celtic Symbols and their meanings. There is no restriction on what you make or the materials you use, the only limitation is your imagination.

Link to Christmas Competition webpage: <https://nbcl.com.au/christmas-competition/>

Link to the [Entry form](#)

Deadline is 2nd December, but it will go very fast, no better time to start thinking about what you could make.

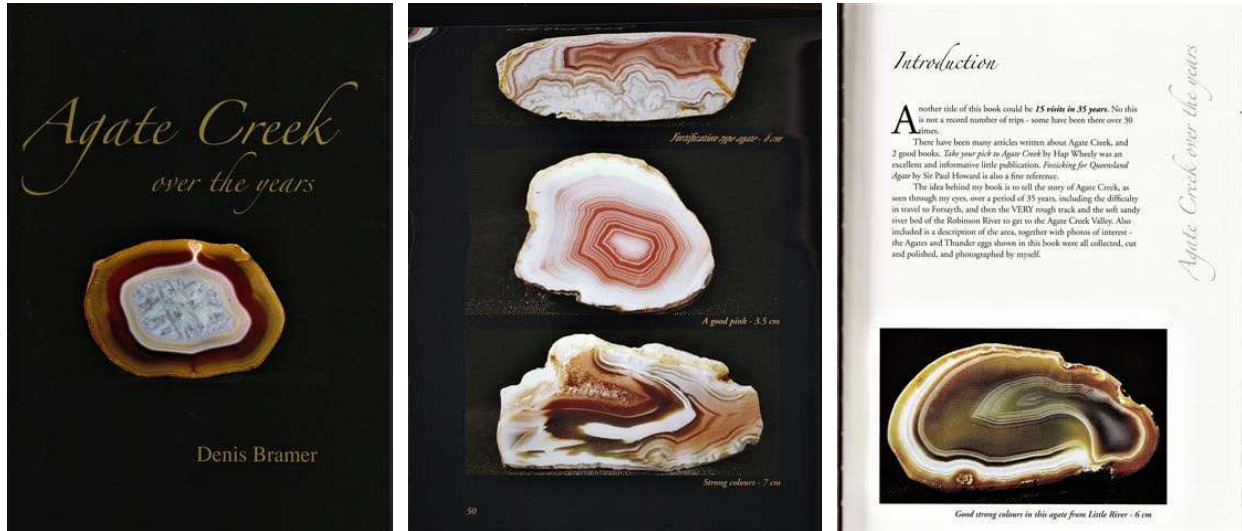
Please feel free to use the upcoming free workshop days that are being provided solely for working on your competition pieces.



NORTH BRISBANE LAPIDARY CLUB INC.

Other News & Information

Purchase your copy of "Agate Creek over the years" by Denis Bramer



You have the opportunity to purchase a lovely book:

"Agate Creek over the years" by Denis Bramer.

Hard cover 144 pages RRP \$39.60. Price for members, only \$15.

Tells the story of Agate Creek over a period of 35 years. Included is a description of the area, together with photos of interest, the Agates and Thunder Eggs shown were collected, cut and polished, and photographed by the author.

To order your copy, please email Carol South at info@nblc.com.au including phone number and deposit money into the club bank account (or pay at the club).

Bank details:
Westpac
BSB 034060
Ac 291941
Ref Agate book

Happy Birthday!

Happy Birthday to these June and July members! We hope you each had a wonderful day.

- | | | |
|--------------------|--------------------|---------------------|
| • Camilla Anning | • Aileen Greensill | • Meghan Kate Deam |
| • Jane Blomkamp | • Carole Honey | • Edgar Hindmarsh |
| • Brian Brehmer | • Ben Hope | • Peter Ross Knight |
| • Jodie Carter | • Pam Kinsela | • Nina McGrath |
| • Haley Corry | • Vincent Lopez | • David McNamara |
| • Peter Crispin | • Matthew Lowcock | • Jeffrey O'Dea |
| • Venessa De Vos | • David Moad | • Jesiah Spargo |
| • Raymond Edwards | • Christoph Pester | • Laurence Stacey |
| • Laura Emmison | • Doreen Vance | • Fiona Watts |
| • Milton Fox | • Brian Worth | • Graeme Westacott |
| • Paul Fulloon | • Rachel Aubrey | |
| • Teaghan Gilhooly | • Ian Botham | |



NORTH BRISBANE LAPIDARY CLUB INC.

Newsletter and Website Discussion Board

(by Website Administrator, Carol Money, and Trisna Sudana)

I'd like to open a discussion board to connect in our virtual world and start by asking you – yes you, dear reader – for your expertise, your knowledge, and what you're working on. Unfortunately, I learnt that I can't post any photos on our website as easily as I'd have thought in the last issue, so we'll stick to the analogue method here.

If you'd like to share your latest piece, a fascinating find or other shiny thing, feel free to email me at t.sudana@gmail.com or info@nblc.com.au going forward. Pictures of your work are always welcome!

THE POOL ROOM ADDITIONS: Spectrolite Spinning Fob Earrings

A Delightful Reminiscence of the Victorian Bygone Era – The Fashionable Spinning Fob! (by Thierry Tomczak)

The Iridescence of the Spectrolite was the stone of choice for this project, but cutting two nearly perfect round stone pastilles, polishing them on both sides was not an easy feat. The same for setting them as a two-sided Bezel Ring. Yet, it was a Labour of Love and much Fun to create. Anything that has Curves and Spins is so Pleasurable, so one was like a Boy with new Toys. One Love flicking them to make them Spin, admiring their Shapes and Colours! A pair of earrings to enhance the Natural Beauty of a Lady, so that she can Mesmerise and Spin the Head of her Admirers, the True Beauty of Earrings. They look so Delightful on Gil, so suited to her Natural Beauty, yet she finds them a bit heavy to her likings.

My learnings: forming 1mm thick sterling silver is hard work, I wished I had used fine silver instead but such is life. Cutting and polishing a pair of round stones pastilles is much work and getting them as round as possible is not an easy feat, hence why you see ovals stones and not round ones. Setting a double-sided bezel was easier than I expected as I used punched discs from an old loyalty plastic card as packers while I was setting the other side, and repeat the process for the unset side.



Thierry's Spectrolite Spinning Fob Earrings, as modelled by Gil (right)

Overall a great project for learning both from a lapidary and a silversmith perspective!
-Thierry Tomczak

Scallop Shell Pendant and Earrings with Gidgee Gidgee Seeds

The Gidgee Gidgee seed, also known as Crab's Eye or Rosary Pea seed is a lustrous Crimson Red seed offset by a Jet Black base. Reminiscent of the red part of the Scallop, my favourite seafood, I made the Scallop Shell pendant a few years back but recently showed a club member how to make them. So decided to make a Pendant and Earrings Set. Melody from the club tried them and she looked smashing with them. Simple classic elegance will always enhance the natural charms of a Lady!
-Thierry Tomczak

NORTH BRISBANE LAPIDARY CLUB INC.



Thierry's Scallop Shell Pendant and Earring Set, as modelled by Melody

Last But Not Least

To our fellow club member, Sandy Groeneveld, who is currently in hospital, we send you our best wishes for a full and speedy recovery.



Our sympathies go out to the family and friends of one of our club members, Ken Prowse. Ken and his wife were fossickers and went on many of the clubs' fossicking trips and also attended the clubhouse. We pass on our deepest condolences to Ken's family.

We send our deepest sympathies to the family and friends to Joyce Stanton. Club member #737, Joyce joined our club in October 1999 and was a regular Tuesday night attendee doing her silverwork, in her later years she attended on Wednesday mornings until a few years ago.